

Danish Designer, Sconces, Pine, Moulded Pine Veneer, Denmark,
 1970s



Title: Danish Designer, Sconces, Pine, Moulded Pine Veneer, Denmark, 1970s
 Dimensions: 9.06 in x 8.18 in x 6.37 in
 Inventory #: 7718
 Price: \$2600.00

Product Description

A pair of pine and moulded pine veneer sconces designed and produced in Denmark, 1970s. Dimensions of Back Plate (inches) : 1.08 x 3.62 x 0.54 (Height x Width x Depth) Sockets take standard E-26 medium base bulbs. There is no maximum wattage stated on the fixtures. Does not include mounting hardware.

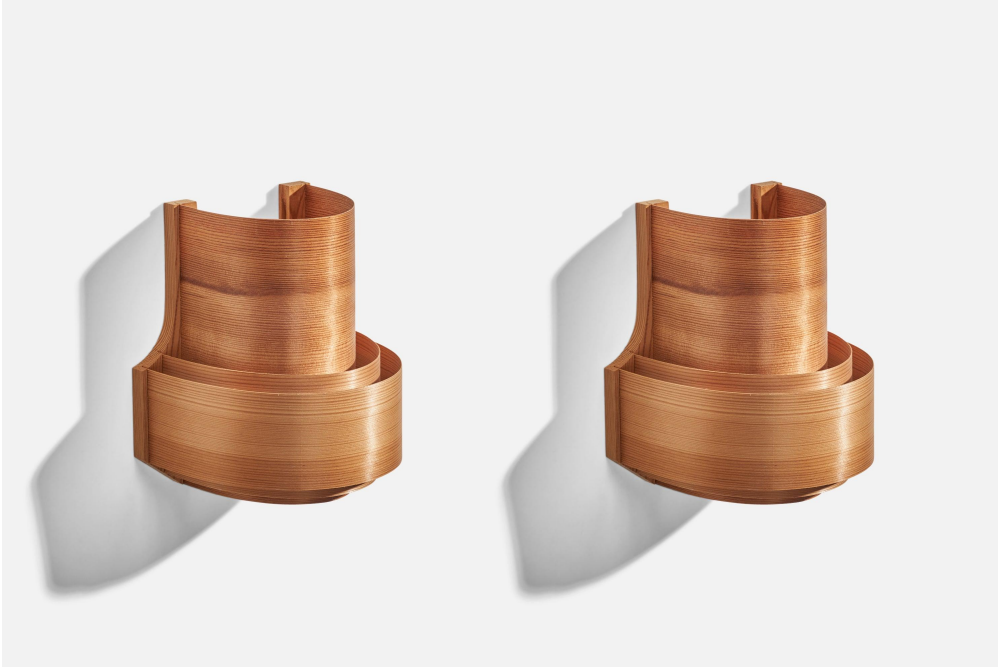
PR
B

500 Ennis St
High Point NC 27260
336-858-5010
www.prbcollection.com



PRB

500 Ennis St
High Point NC 27260
336-858-5010
www.prbcollection.com



PR
B

500 Ennis St
High Point NC 27260
336-858-5010
www.prbcollection.com

